



# MONTHLY MEMBERSHIP PROGRESS REPORT

District 11 C1

Results as of: 6/30/2015

GMT: THOMAS MATNEY

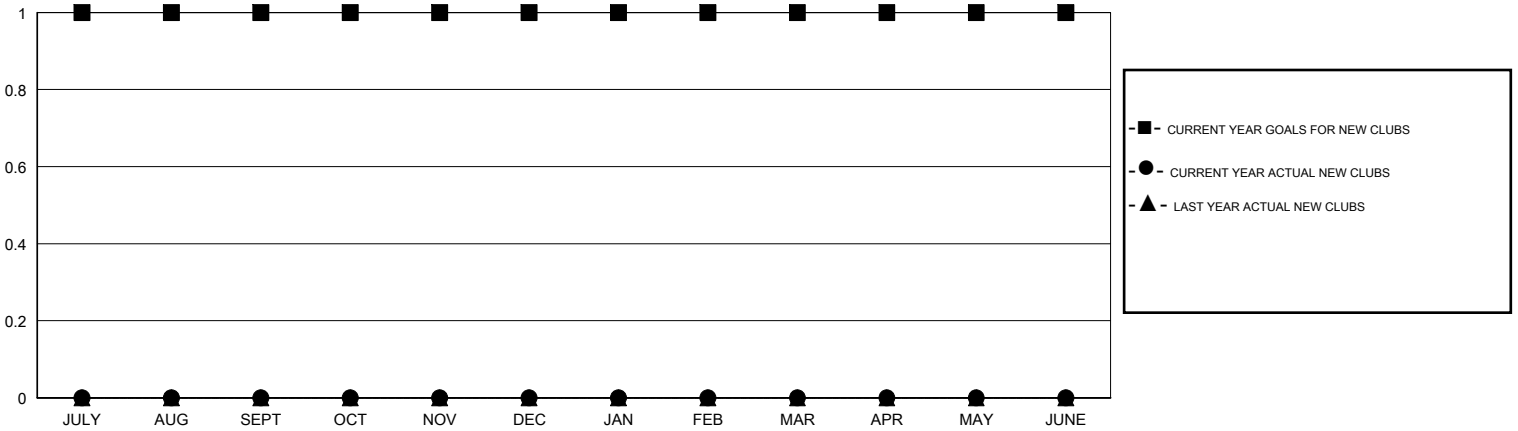
LOCATION MICHIGAN

GMT CA 1

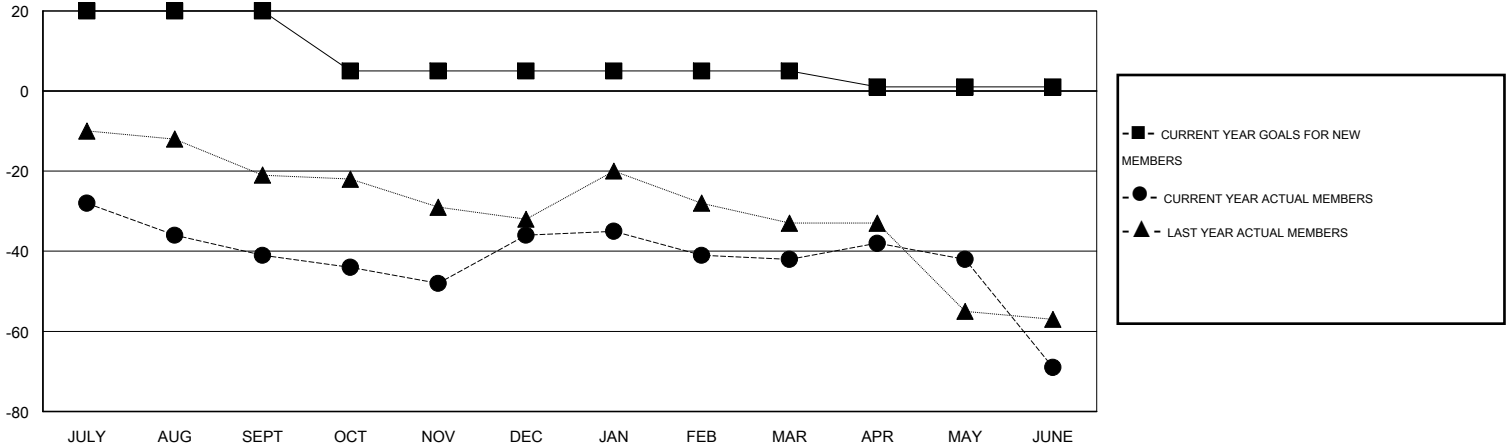
Clubs				
RESULTS FOR 2014-2015				
QUARTER	NEW CLUB GOAL	NEW CLUBS	DROPPED CLUBS	NET GAIN/LOSS
JULY/AUG/SEPT	1	0	1	-1
OCT/NOV/DEC	0	0	0	0
JAN/FEB/MAR	0	0	0	0
APR/MAY/JUNE	0	0	1	-1

Members				
RESULTS FOR 2014-2015				
QUARTER	NEW MEMBER GOAL	CHARTER AND NEW MEMBERS ADDED	DROPPED MEMBERS	NET GAIN/LOSS
JULY/AUG/SEPT	20	12	53	-41
OCT/NOV/DEC	-15	53	48	5
JAN/FEB/MAR	0	13	19	-6
APR/MAY/JUNE	-4	21	48	-27

GOALS AND ACTUAL NEW CLUBS CUMULATIVE



GOALS AND ACTUAL MEMBERS CUMULATIVE



DROPPED CLUBS: 2	24 CLUBS OF 40 ADDED 1 OR MORE NEW MEMBERS	<b>GENDER DISTRIBUTION</b> MALE 717 (69.95%) FEMALE 308 (30.05%)
<b>DROPPED MEMBERS</b> DECEASED 15 CLUB CANCELLED 18 OTHER 135 TOTAL 168	<a href="#">CLICK HERE FOR HEALTH ASSESSMENT DATA</a>	FAMILY UNIT MEMBERS 181 HEAD OF HOUSEHOLD 89 NON-HEAD OF HOUSEHOLD 92